

Manual Addendum

For

Dyna-Fog[®] Hurricane ES[™]

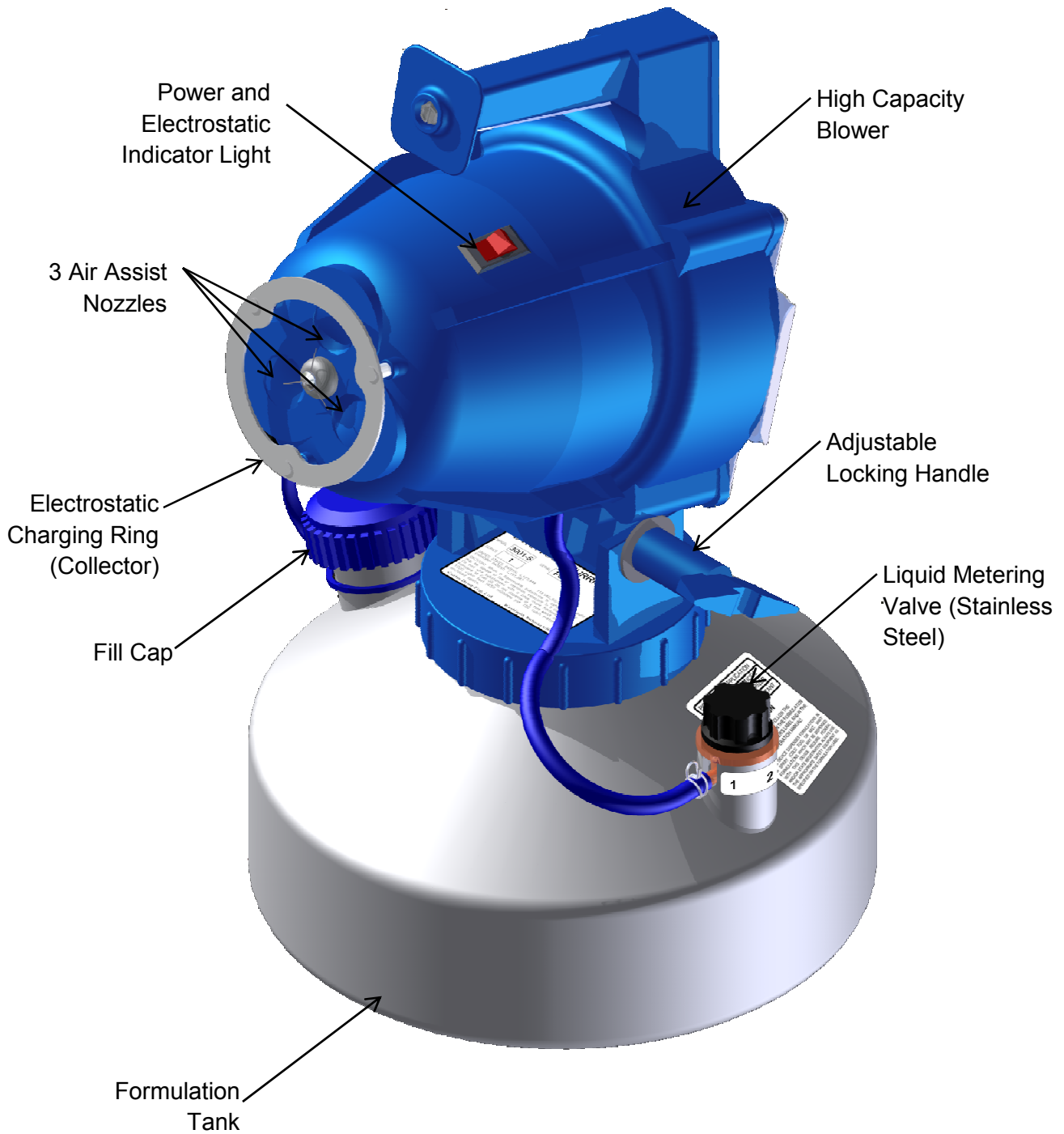
The following pages attached in this addendum should be used instead of the manual when referring to components on your Hurricane ES[™].

Warranty

Limited Warranty

CURTIS DYNA-FOG warrants to the original purchaser for one year after the date of purchase that its products are free from manufacturing defects. Should any defect appear and be the subject of a written notice from purchaser, received by CURTIS DYNA-FOG within the one-year period, CURTIS DYNA-FOG at its option will repair, replace or send replacement parts for the defective product at its expense. If repair parts are necessary, these could be either new or remanufactured, but all shall be of new quality. Note: Some components like Engines and Blowers are covered by separate warranties by the Manufacturer, and excluded from any warranty offered by CURTIS DYNA-FOG. These may have different terms and claim procedures. CURTIS DYNA-FOG can supply these Warranty Statements to you, if requested and applicable. The foregoing is the sole and exclusive remedy for any breach of warranty by CURTIS DYNA-FOG. This warranty does not cover cosmetic damage or damage due to the Acts of God, accident, misuse, abuse, normal wear or negligence to the product. THE IMPLIED WARRANTIES OF MERCHANTABILITY AND FITNESS FOR PARTICULAR PURPOSE ARE EXCLUDED AND CURTIS DYNA-FOG SHALL HAVE NO LIABILITY FOR ANY CONSEQUENTIAL, INCIDENTAL OR SPECIAL DAMAGES EVEN IF CURTIS DYNA-FOG WAS APPRISED OF THE POSSIBILITY THEREOF. In no event shall CURTIS DYNA-FOG's liability hereunder exceed the amount of the purchase price paid for the product. Any warranty claim must be accompanied by proof of purchase such as a sales receipt, serial number or receipted invoice to establish that the product is within the warranty period.

Main Components Diagram- *Hurricane ES*

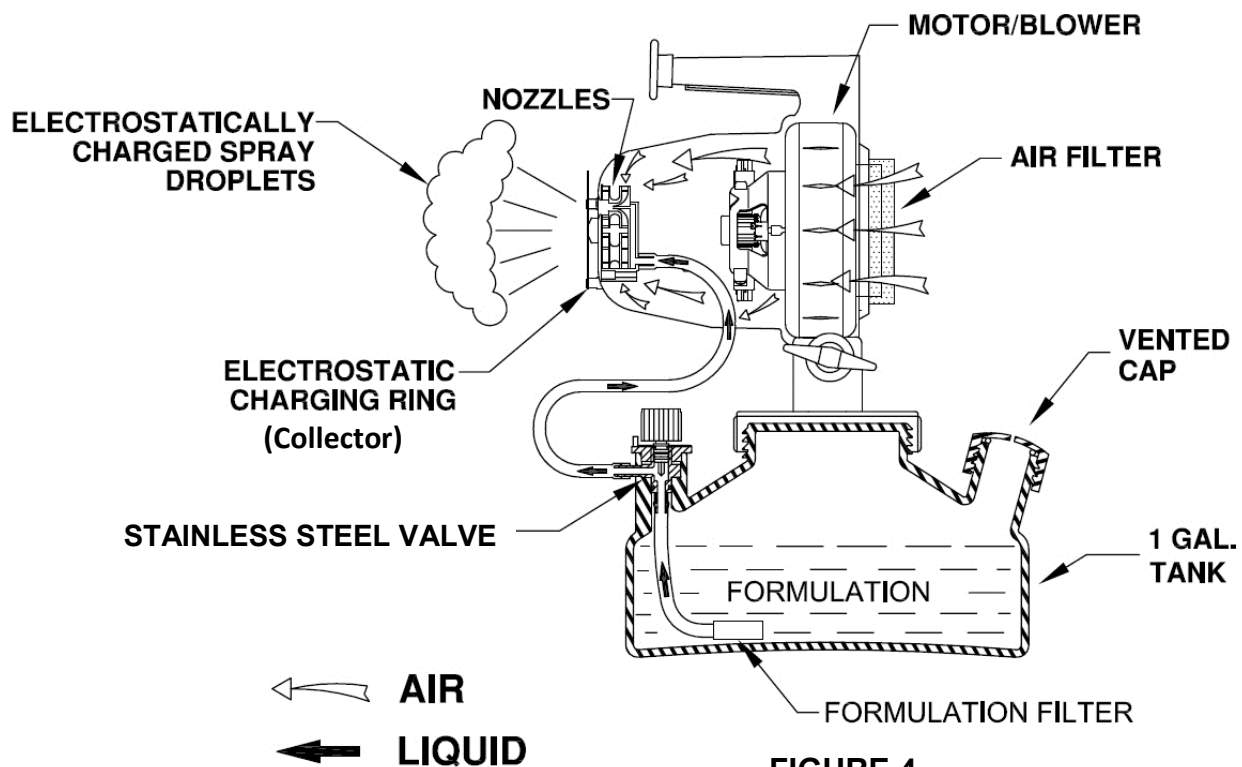


4.0

Principles of Operation- *Hurricane ES*

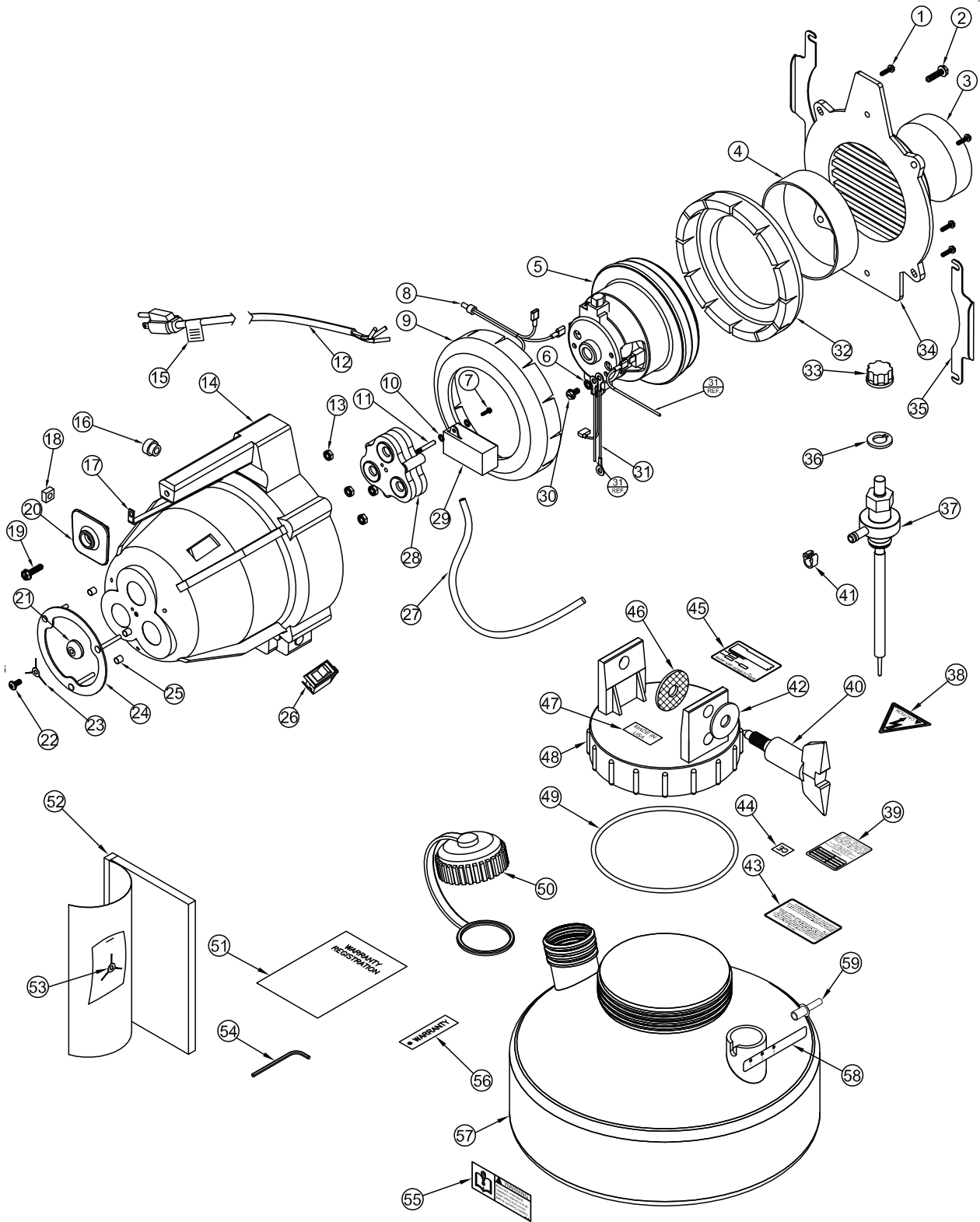
This machine consists of a motor/blower assembly, high voltage power supply, charging ring and electrode, blower housing, a nozzle, formulation tank and metering valve. The blower is a two-stage centrifugal compressor driven by a universal motor operating at a speed of 20,000 rpm. The blower moves a large amount of air through the nozzle system. The nozzle has six (6) stationary fins, which direct the air to create a swirling effect of the air mass as it leaves the nozzle. In the center of this exiting swirling air, a liquid supply spout tube injects formulation. The liquid is delivered to the nozzle by a negative pressure at the nozzle caused by the exiting air mass. The flow rate is controlled by a one turn precision metering valve located at the formulation tank. Generally, the sizes of the output droplets increase with increasing flow rates and with increasing viscosity of the liquid being dispensed.

After the nozzles shear the formulation into billions of droplets, the droplets are dispersed into the atmosphere. As the droplets exit the nozzles they pass through an "electrostatic ion field". This field is created using the combination of a high voltage power supply, an emitting electrode and charging ring (Collector). The result is billions of electrostatically charged droplets that gravitate to neutral objects to form a uniform coverage. The various components are identified in the fluid systems and major components diagrams.



9.0

Hurricane ES Exploded Parts Diagram



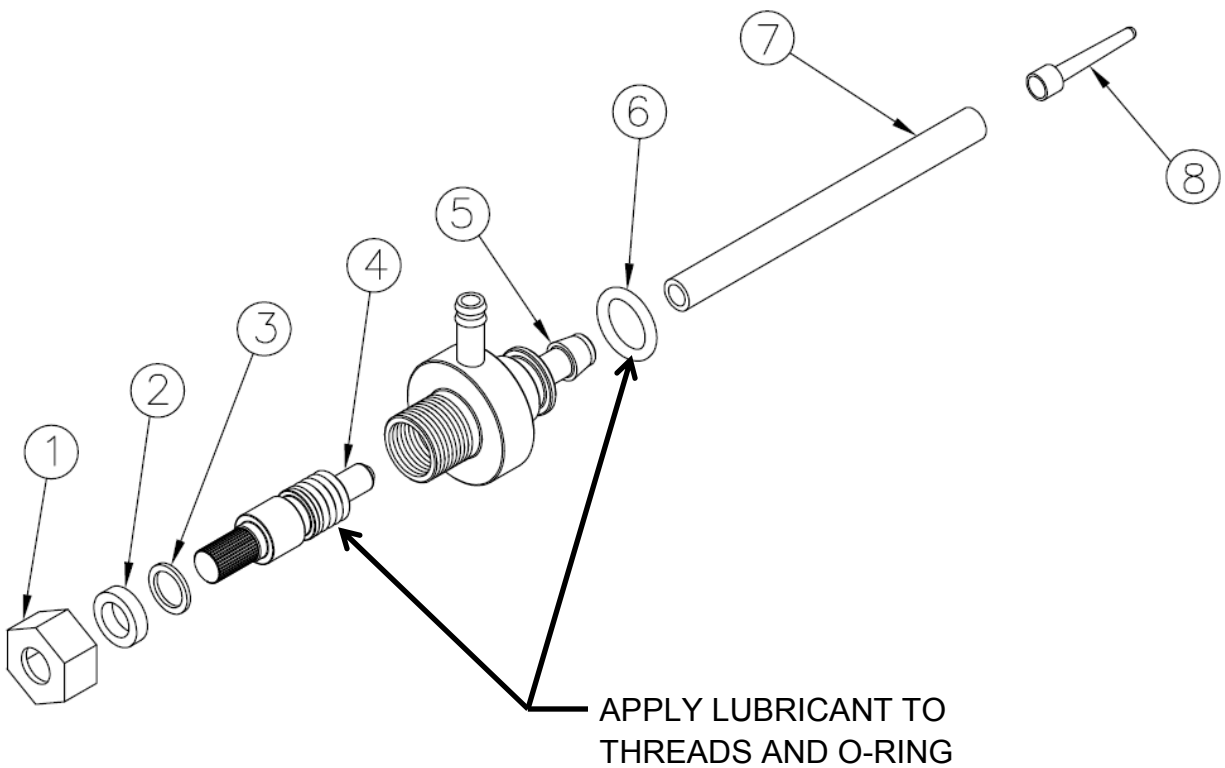
9.1

Hurricane ES Exploded Parts List

ITEM	QTY	PART NUMBER	ITEM DESCRIPTION
1	5	62161	SCREW, 10 X ¾ HIGH-LOW THR.
2	1	62160	SCREW, 10-16 X 1.25 SHWH.
3	1	62124	FILTER, AIR 3.875 DIA.
4	1	62144-1	SPACER, PVC, MOTOR
5	1	62147-1	MOTOR, BLOWER AY.120V PANASONIC
	1	62147-3	REPLACEMENT BRUSH KIT (110V)
	1	62147-2	MOTOR, BLOWER AY., 240V, PANASONIC
	1	62147-4	REPLACEMENT BRUSH KIT (220V)
6	1	138530	WASHER,LOCK,#8,INTO, SST
7	1	65228	SCREW,6-32X1/2,PHCR,SST
8	1	62189-1	WIRE AY., BLACK
9	1	62366	GASKET, FOAM, DIE CUT (.187 THK.)
10	1	138527	WASHER, LOCK, #6, INTO, SST.
11	1	62187	STANDOFF, POWER SUPPLY, ES
12	1	62189-2	WIRE AY., POWER, WHITE, 110V
	1	62189-4	WIRE AY., POWER, WHITE, 220V.
13	4	62212	NUT/WASHER, #10-24
14	1	62148	HOUSING (MACHINED)
15	1	86855	TAG, EXTENTION CORD INFORMATION
16	1	20180-3	STRAIN RELIEF (110V)
	1	20180-4	STRAIN RELIEF (220V)
17	1	62143	GROUND STRIP
18	1	62367	NUT, 3/8 – 16 SQUARE
19	1	62053-1	HAND STOP, SLOTTED
20	1	62162	SCREW 10-12 X 3/4 SHWH
21	1	62186	BUTTON, ELECTRODE SUPPORT
22	1	62441	SCREW, #10-3/4", BUTTON
23	1	62172	ELECTRODE, 3-PRONG
24	1	62170	RING/STUD AY.
25	3	62171	SPACER, NYLON, .196 ID X .312 OD X .25 LONG
26	1	86819-1	SWITCH, LIT ROCK, 110V
	1	86819-2	SWITCH, LIT ROCK, 220V
27	1	62227-3	TUBE, BLUE, 3/16 ID. X 5/16 OD.
28	1	62045-34-1	NOZZLE AY., YELLOW MOD.

29	1	62173-1	POWER SUPPLY, 110V
	1	62173-2	POWER SUPPLY, 220V
30	1	9425089	SCREW, #8-32 X 3/8, HEX, SLOTTED
31	1	62189-3	WIRE AY., GREEN
32	1	62366-1	GASKET, FOAM, DIE CUT (.375 THK.)
33	1	62211	KNOB AY., FORMULATION
34	1	62002-54	HOUSING CLOSURE, BLUE
35	2	62233	BRACKET, SUPPORT, REAR HOUSING
36	1	62139	WASHER, KNOB
37	1	62195-2	VALVE AY., STAINLESS STEEL
38	1	62197	LABEL, WARNING, ELECTRIC SHOCK
39	1	62194	LABEL, CAUTION
40	1	62010-54	LOCKING HANDLE
41	1	21158-1	CLAMP, 5/16, PLASTIC
42	1	62128	WASHER, LOCKING HANDLE
43	1	62191	LABEL, WARNING/CAUTION
44	1	39056	LABEL, CE
45	1	62151-13	LABEL, ID, 120V
	1	62151-14	LABEL, ID, 240V
46	1	62083	WASHER, FRICTION
47	1	63409	LABEL, MADE IN USA
48	1	62131-1	CLEVIS, BLOWER (BLUE)
49	1	10000-343	O-RING
50	1	62135-1	CAP AY., TANK (BLUE)
51	1	20496	WARRANTY REGISTRATION TAG.
52	1	62149	MANUAL, HURRICANE ES
53	1	62172	ELECTRODE, 3-PRONG
54	1	62497	WRENCH, ALLEN, 5/64
55	1	62196	LABEL, WARNING, READ THE MANUAL
56	1	20495	WARRANTY TAG, 1 YEAR
57	1	62130-12	TANK, HURRICANE ES (MACHINED)
58	1	62198	LABEL, FLOW RATE INDICATOR
59	1	58652	RIVET, DRIVE, .187 X .6L (NATURAL)

Hurricane ES Stainless Steel Metering Valve Assemble (P/N: 62195-2)



Item	Part Number	Description
1	32692	Nut, Packing
2	32690	Washer, Packing
3	32691	Washer, Brass
4	62319-2	Stem, Metering Valve, Stainless Steel
5	62180-1	Valve Body, Stainless Steel
6	10100-110	O-Ring
7	62227-1	Tube, Blue, 3/16 ID. X 5/16 OD.
8	80408	Filter, Long tapered, 130 Microns

10.0

Hurricane ES Carrying and Storage Bag



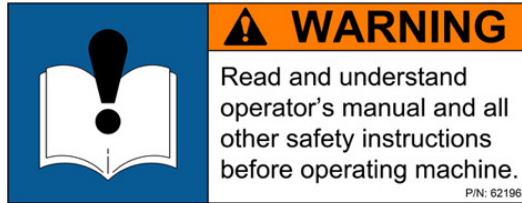
Large pouch for storing extension cord, owner's manual, tools, etc...



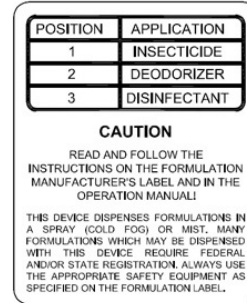
P/N- 62188
Bag, Machine Carrying/Storage

11.0

Hurricane ES Labels



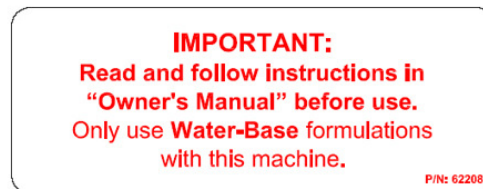
Label, Warning, Read the Manual (P/N:62196)



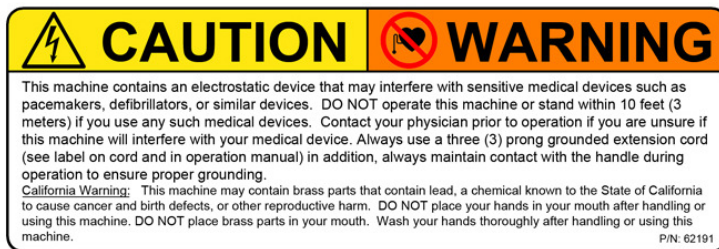
Label, Flow Caution (P/N:62194)



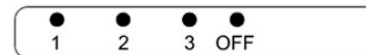
Label, Caution (P/N:62197)



Label, Read Manual (P/N:62208)



Label, Warning, Electrostatic (P/N:62191)



Label, Flow Rate Indicator (P/N:62198)