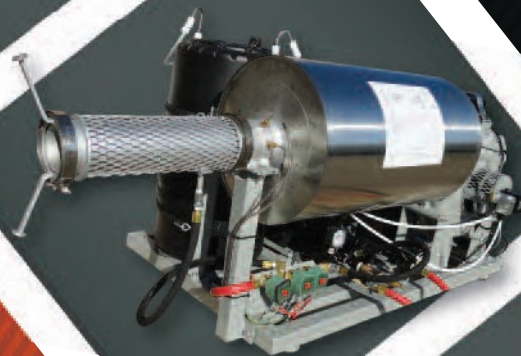
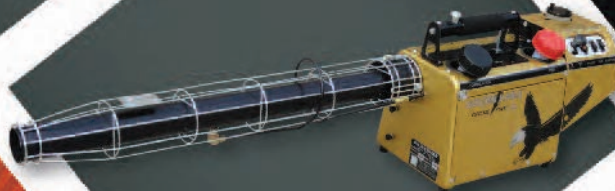


Curtis Dyna-Fog  
Products Professional  
Vector Control Equipment  
Catalog 2016



Curtis Dyna-Fog a Division of B&G Equipment Company  
135 Region South Drive • Jackson GA 30233  
678-688-5601 • [www.bgequip.com](http://www.bgequip.com)

# History of Curtis Dyna-Fog

## Innovators of Spraying and Fogging Technology Since 1947

Curtis Dyna-Fog, Ltd. was founded in 1947 in Dayton, Ohio by Russell R. Curtis and his father W.H. Curtis. Originally named Curtis Automotive Devices, the company specialized in manufacturing valves for the automotive and aircraft industry. Before joining his father in business, Russell Curtis attended the University of Cincinnati where he graduated in Aeronautical Engineering and later completed a cooperative work program at Wright Airfield (now Wright Patterson Air Force Base). At the time, Wright Airfield was the center of all aircraft technology. In 1952 Curtis Automotive Devices moved to Bedford, Indiana to be closer in proximity to its major customers. The company began producing other types of components for the aircraft industry and began doing some development work using acquired Pulse-Jet Engine Technology. During Russell Curtis' employment at Wright Airfield in Dayton he was first exposed to a Pulse-Jet Engine, a unique device used to power the German V1 rockets during the war. The Pulse-Jet was comprised of the basic technology that would later be the foundation for his companies future.

Russell and his father continued working on the possibilities of producing a pulse-jet fogger for use in commercial applications. One of the first pulse-jet products they produced was the Dyna-Jet "Red Head" miniature engine for use in model rocketry. Initially developed in 1945 by a long time associate of Russell Curtis, William Tenney of Aeromarine Company, the



Russell Curtis  
Founder of Curtis Dyna-Fog

Dyna-Jet once held the American Modelers Association land speed record at 179+ MPH! A speed amazing at the time, especially when only standard grade gasoline was available.

After years of refining existing designs, by 1954 the first commercially available pulse-jet mosquito fogger (The Curtis Junior Model) was being produced. In the first year more than 500 machines were sold throughout the country. By 1956, demand grew to the point where more than 4000 machines were being produced each year. As a result of increasing demand for the pulse-jet machines, Russell Curtis moved the company in 1958 into a newly constructed 20,000 square foot facility in Westfield, Indiana.

## Table of Contents

PRODUCT	PAGE
Golden Eagle	3
Superhawk	4
Blackhawk	5
Trailblazer	6
Model 1200	7
Silver Cloud	8
Dyna-Jet L-30	9
Maxi-Pro	10
Typhoon	11
LV8	12
Twister XL3	13
Light Traps	14
Hurricane, Mister III, Nightstar, Mini-Pro, Mini-Light 2990	15



Sales and Technical Support  
135 Region South Drive  
Jackson GA 30233  
678-688-5601  
[www.bgequip.com](http://www.bgequip.com)

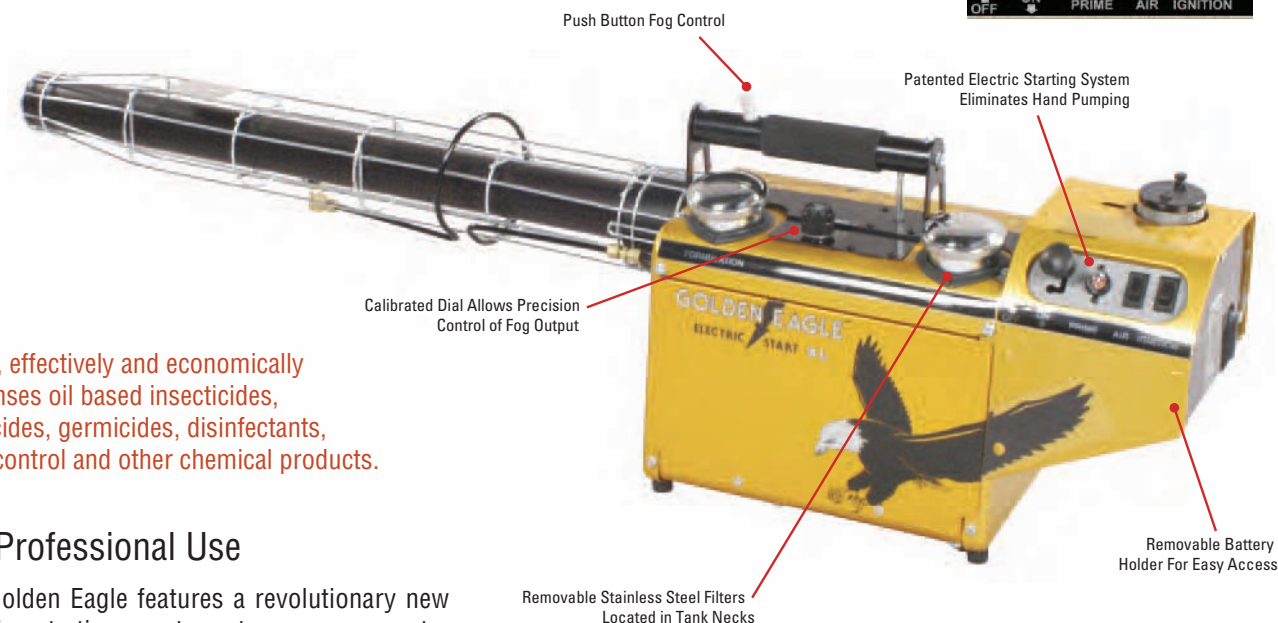
Manufacturing and R&D Facility  
525 Park Street  
Westfield, IN 46074  
[www.dynafog.com](http://www.dynafog.com)



# Golden Eagle Electric Start XL

Thermal Aerosol-Fog Petroleum-Based, Resonant Pulse Principle

Golden Eagle Control Panel



Easily, effectively and economically dispenses oil based insecticides, fungicides, germicides, disinfectants, odor control and other chemical products.

## For Professional Use

The Golden Eagle features a revolutionary new electric starting system to assure greater reliability, effectiveness, fuel efficiency and ease of operation eliminating the need for manual starting.

No other chemical applicator dispenses oil based insecticides, fungicides, germicides, disinfectants, odor control and other chemical products as easily, effectively and economically. No other aerosol generator enjoys such world-wide acclaim. Golden Eagle, the portable powerhouse that excels on application problems where other machines fail: for those hard-to-reach areas indoors or outdoors, and for the little as well as the large jobs such as mosquito control to combat malaria and dengue fever.

And finally for its size, no other machine surpasses the Golden Eagle's application capacity or its speed in completing difficult chemical application jobs: warehouses, factories, food processing plants, greenhouses, parks, camp-grounds cattle barns, swine/poultry houses, grain mills shopping centers, schools, restaurants, apartment complexes, hotels and much more.

A special backpack version is available for small scale applications of fungicide to certain tree crops such as: rubber, oil palm and cocoa.

Part #	Description
58500	Golden Eagle Electric Start XL
58500-20	Golden Eagle 2610, Series 3

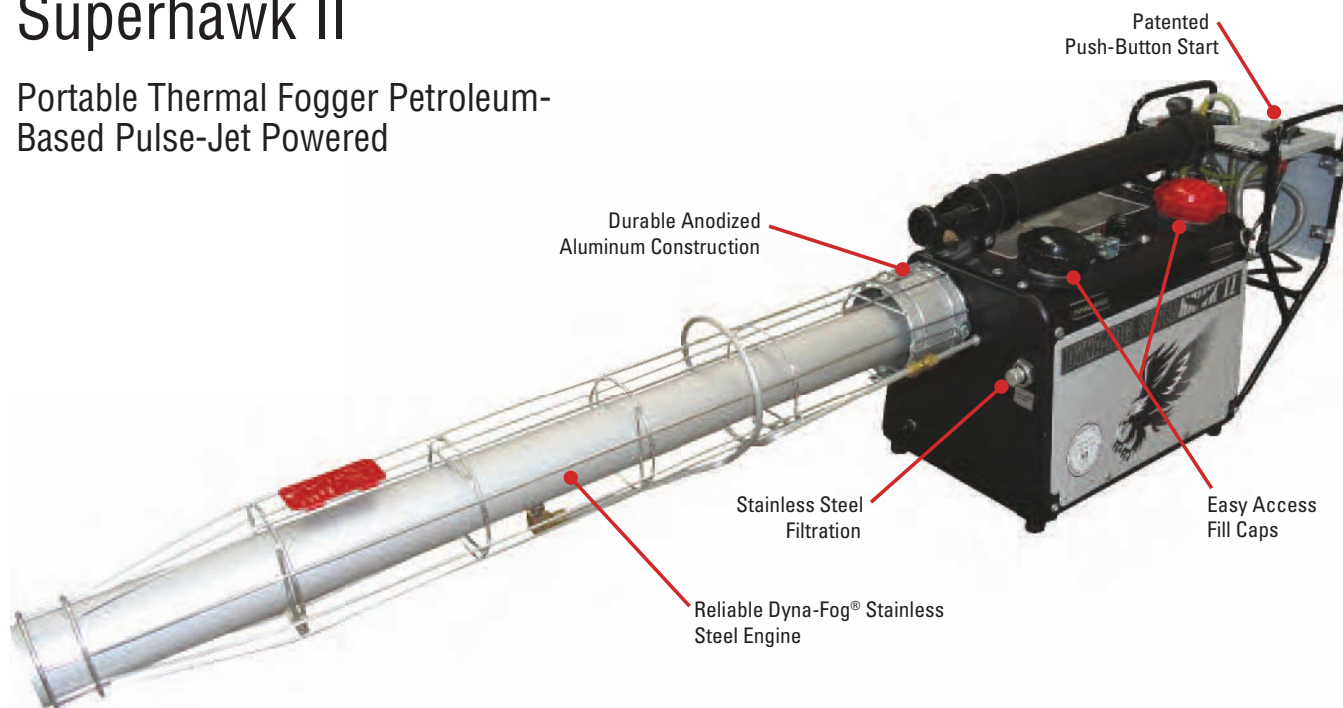
## GOLDEN EAGLE ELECTRIC START XL

### SPECIFICATIONS

Formulation Output	0-9 gallons/hr; 0-34 liters/hr; covers 57,000 cubic feet; 1600 cubic meters/min
Droplet Size	0.5 – 50 microns VMD
Engine	30 Hp; 22 kW; 18,900 Kcal/hr
Fuel Consumption	0.5 GPH; 1.9 liters/hr
Weight	Empty: 19 lbs; 8.6 kg. Full: 27 lbs; 12.2 kg
Fuel Tank	1.2 quarts; 1.0 liter
Formulation Tank	1.1 gallons; 4.2 liters
Power Supply	Eight 1.5 V D size alkaline batteries. A rechargeable 12V DC battery (optional). Any 12V DC vehicle battery; connect to 12V receptacle with auxiliary battery cable.
Dimensions	52 x 9.5 x 14.5 inches; 132 x 24.1 x 36.8 cm (L x W x H)
Shipping Data	55 x 11 x 16 inches; 140 x 28 x 41 cm (L x W x H) 32 lbs; 14.5 kg 5.5 cubic feet; 0.15 cubic meters

# Superhawk II

Portable Thermal Fogger Petroleum-Based Pulse-Jet Powered



- Fast and easy starting every time
- Huge fog output
- Ultra-lightweight
- Compact size
- Limited 2-year warranty

Part #	Description
58800-20	Superhawk orifice - export only
58800-1	Superhawk metering - export only

## For Professional Use

Compact, ultra-light-weight and powerful, the Superhawk product line offers yet another option for Public Health officials and other industry professionals. Powered by the same reliable Dyna-Fog® stainless steel engine, the Superhawk remains the machine of choice by Health Ministry professionals, Mosquito Control Departments, Pest Control operators and others.

The Superhawk's ultra-light-weight design and ability to produce large volumes of dense fog make the Superhawk ideal for use in both local and remote areas. Built to rigid quality standards and backed by more than 65 years in the industry, the Superhawk continues to be an essential part of any program where performance, simplicity and reliability are required.

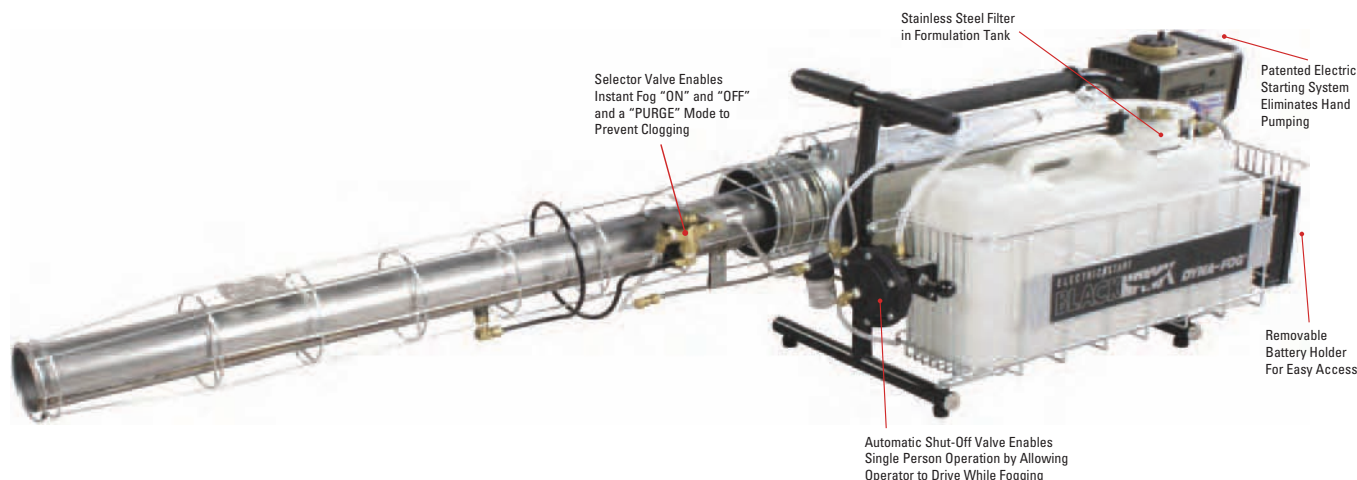
## SUPERHAWK II

### SPECIFICATIONS

Formulation Output	0-11 gallons/hr; 0-42 liters/hr; covers 76,000 cubic feet or 2200 cubic meters/min
Droplet Size	0.5 – 50 microns VMD
Engine	30 Hp; 22 kW; 18,900 Kcal/hr
Fuel Consumption	0.5 GPH; 1.9 liters/hr
Weight	Empty: 16.5 lbs; 7.5 kg. Full: 19 lbs; 11.1 kg
Fuel Tank (aluminum)	1.2 quarts; 1.0 liter; vented, non-pressurized
Formulation Tank (aluminum)	1.2 gallons; 4.5 liters; pressure = 4 psi; 0.28 bar
Flow Control	Metering valve or fixed orifice
Power Supply	Eight 1.5V D size alkaline batteries. A rechargeable 12V DC battery (optional). Any 12V DC vehicle battery; connect to 12V receptacle with auxiliary battery cable.
Dimensions	52 x 9 x 14 inches; 132 x 24 x 36 cm (L x W x H)
Options	Interchangeable orifice Sewer and leak detection attachment available
Shipping Data	55 x 11 x 16 inches; 140 x 28 x 41 cm (L x W x H) 32 lbs; 14.5 kg 5.6 cubic feet; 0.16 cubic meter

# Blackhawk Electric Start

Thermal Aerosol-Fog Petroleum-Based, Resonant Pulse Principle



- The Blackhawk is designed for a wide range of jobs with maximum efficiency for handling petroleum-based products
- One year limited warranty

Part #	Description
86550	Blackhawk Electric Start 2620
86550-20	Blackhawk Electric Start

## For Professional Use

The Blackhawk was designed for a wide range of jobs with maximum efficiency for handling petroleum-based products. The Blackhawk is capable of dispersing disinfectants, deodorizers, germicides and insecticides for application in greenhouses, a wide range of warehouses and for outdoor pest control in parks, gardens and golf courses.

The Blackhawk's simple, innovative design reduces unit maintenance and will provide years of rugged, reliable performance. Up to 18 gallons per hour capacity, rugged construction, easy maintenance and our patented electric starting system assures greater reliability, effectiveness, fuel efficiency and ease of operation. The machine is also equipped with an easy to clean stainless steel formulation filter that keeps the system free of unwanted dirt and residue.

## BLACKHAWK ELECTRIC START

### SPECIFICATIONS

Formulation Output	0-18 gallons/hr; 0-68.4 liters/hr; covers 114,000 cubic feet or 3200 cubic meters/min
Droplet Size	0.5 – 50 microns VMD
Engine	44 Hp; 33 kW
Fuel Consumption	0.6 GPH; 2.3 liters/hr
Weight	Empty: 41 lbs; 18.6 kg. Full: 75 lbs; 34.1 kg
Fuel Tank	0.5 gallons; 1.9 liters
Formulation Tank	3 gallons; 11.4 liters
Power Supply	Eight 1.5V D size alkaline batteries. A rechargeable 12V DC battery (optional). Any 12V DC vehicle battery; connect to 12V receptacle with auxiliary battery cable.
Dimensions	68.3 x 15 x 16.8 inches; 173.5 x 38.1 x 42.7 cm (L x W x H)
Shipping Data	71 x 19 x 20 inches; 180 x 48 x 54 cm (L x W x H) 73 lbs; 33.1 kg 15.6 cubic feet; 0.44 cubic meter Drum Kit: 8 lbs; 3.6 kg

# Trailblazer Electric Start

## Portable Thermal Fogger

- Stainless steel pulse-jet engine
- Rugged chemical-resistant polyethylene formulation and fuel tanks

Engineered with the user in mind, the Dyna-Fog Trailblazer is designed to dispense both petroleum and water-based products easier and more efficiently than other applicators.

For simple starting and operation, the Trailblazer features Dyna-Fog's patented 12 volt electric starting system to assure reliability, effectiveness, fuel efficiency and ease of operation. No pressurized gasoline tank required!

The Trailblazer produces a high output, non-residual thermal fog with virtually no carbon monoxide, making it ideal for applications such as: dispensing fungicides, insecticides, germicides disinfectants and odor counteractants for application in green-houses, warehouses, factories, food processing plants, parks, campgrounds, cattlebarns, swine/ poultry houses, grain mills, restaurants, hotel complexes and much more. The Trailblazer is also used by Health Ministries throughout the world for controlling mosquitos that transmit diseases like West Nile Virus, Encephalitis, Malaria, Dengue Fever, Yellow Fever and Chagas.

Part #	Description
43200	Trailblazer Electric Start
43400-20	Export Only Patriot



### TRAILBLAZER

#### SPECIFICATIONS

Formulation Output	0-5 gallons/hr; 0-19 liters/hr; covers 32,000 cubic feet or 900 cubic meters/min
Droplet Size	0.5 – 50 microns VMD
Engine	30 Hp; 18 kW; 15,100 Kcal/hr
Fuel Consumption	0.3 GPH; 1.1 liters/hr
Weight	Empty: 27 lbs; 12.5 kg. Full: 37 lbs; 16.8 kg
Fuel Tank	0.85 quarts; 0.8 liter; non-pressurized
Formulation Tank	1 gallon; 3.8 liters; pressure = 4 psi; 0.28 bar
Flow Control	Metering valve
Power Supply	Eight 1.5V D size alkaline batteries. Any 12V DC vehicle battery; connect to 12V receptacle with auxiliary battery cable.
Options	Portable / rechargeable high energy 12 Volt DC battery (charger included).
Dimensions	29 x 10 x 18.2 inches; 74 x 25.4 x 46.4 cm (L x W x H)
Shipping Data	32 x 14 x 21 inches; 81 x 36 x 53 cm (L x W x H) 41 lbs; 18.6 kg 5.44 cubic feet; 0.154 cubic meter

# Patriot

## Portable Thermal Fogger

- Reliable performance
- Produces large volumes of fog

Reliable performance for mosquito control professionals. The Patriot's patented starting system even enables use in areas where poor quality gasoline is all that is available. Designed from over 50 years experience and built to the highest quality standards, the Patriot will give superior performance with simplicity and durability.

Produces more fog than any machine of its size in the world and can be started from a variety of battery sources.

Patented Fuel Priming System eliminates need for pressurized fuel tank. A 12 volt starting system ensures reliable starting even when battery power declines!



### PATRIOT

#### SPECIFICATIONS

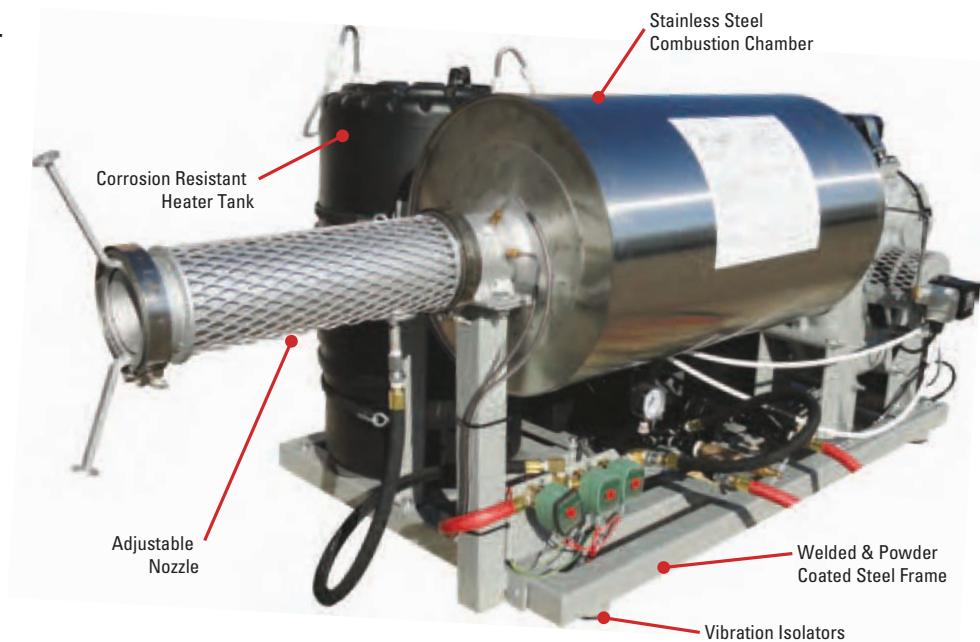
Formulation Output	0-5 gallons/hr; 0-19 liters/hr; covers 32,000 cubic feet or 900 cubic meters/min
Droplet Size	0.5 – 50 microns VMD
Engine	30 Hp; 18 kW; 15,100 Kcal/hr
Fuel Consumption	0.3 GPH; 1.1 liters/hr
Weight	Empty: 27 lbs; 12.5 kg. Full: 37 lbs; 16.8 kg
Fuel Tank	0.85 quarts; 0.8 liter; non-pressurized
Formulation Tank	1 gallon; 3.8 liters; pressure = 4 psi; 0.28 bar
Power Supply	Eight 1.5V D size alkaline batteries. Any 12V DC vehicle battery; connect to 12V receptacle with auxiliary battery cable.
Dimensions	29 x 9 x 18 inches; 74 x 24 x 46.4 cm (L x W x H)
Shipping Data	32 x 14 x 21 inches; 81 x 36 x 53 cm (L x W x H) 43 lbs; 19.5 kg 5.6 cubic feet; 0.15 cubic meter



# Dyna-Fog Model 1200

## The World's Standard for Maximum Fog Output

- Faster coverage saves man hours and truck time
- Instant display hour meter and temperature meter
- Connects to a standard chemical drum
- 120 gal/hr (454 L/hour) Enables you to fog three times faster than conventional vehicle mounted foggers
- Tremendous capacity is capable of covering 12 acres in one minute (49000 square meters per minute)



### Removable Remote Control Box



Features in-cab visual/operating capabilities for:

- Remote start
- Analog temperature gauge
- Controllable output
- Heating chamber on/off
- Fog on/off

Ultimate fog applicator for large areas. The model 1200's tremendous capacity of 120 gallons (454 liters) per hour makes it capable of blanketing mammoth areas with dense heavy fog that destroys insects and pests in a fraction of the time required by other equipment.

Fully equipped with remote controls, it can be started, the fog can be regulated, and the machine can be shut off from the cab of the vehicle. An hour meter, a temperature gauge, two 120 volt AC receptacles, a heavy duty 12 volt DC battery and controllable output are all regular equipment on the 1200.

No other machine combines an extremely low noise level (less than 70 decibels) with such an enormous fog output. The 1200 runs much quieter than a typical thermal fogger or cold fogger.

Part #	Description
49000	Dyna-Fog Model 1200
49000-20	Dyna-Fog Model 1200

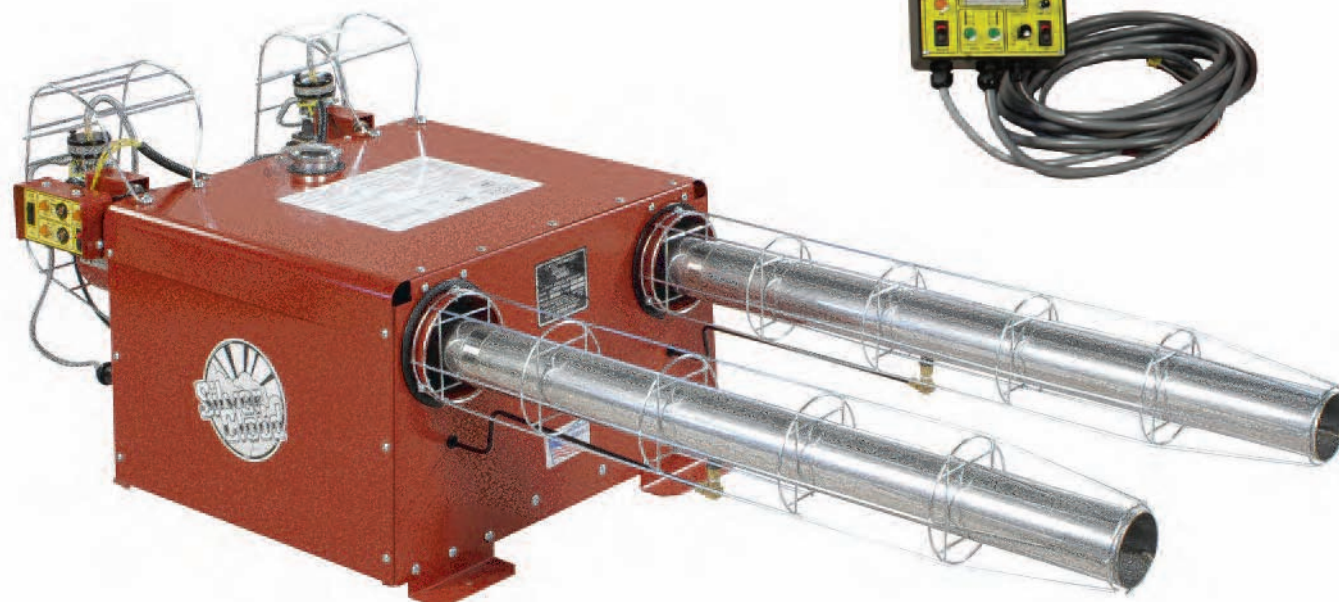
## DYNA-FOG MODEL 1200

### SPECIFICATIONS

Formulation Output	15-120 gallons/hr; 57- 454 liters/hr; covers 12 acres; 5 hectares/min
Droplet Size	10 - 100 microns VMD
Nozzles	Adjustable high-volume output single nozzle. Two 45 degree directional elbows with stainless steel clamps. Optional Cold Fog Kit comes with rotary nozzle
Engine	Kohler 9.5 Hp (277 cc), 4-cycle, OHV, electric start. Optional Honda 10.5 Hp (344 cc), 4-cycle, OHV, or Yanmar diesel
Pump	Positive displacement gear pump
Weight	Empty: 467 lbs; 281 kg. Full: 620 lbs; 281 kg
Fuel Tank	5 quarts; 4.7 liters
Formulation / Heater Tank	15 gallons; 56.8 liters
Gauges and Meters	Digital tachometer/Hourmeter for engine. Pump control pressure gauge, 115V AC meter for generator. Remote control Hourmeter/Temperature gauge
Dimensions	79 x 35 x 32 inches; 201 x 89 x 81 cm (L with nozzle x W x H) 55 x 35 x 32 inches; 140 x 89 x 81 cm (L without nozzle x W x H)
Options	Cold Fog Kit #49092 Weather Proof Cover #49100-1
Shipping Data	60 x 43 x 42 inches; 152 x 109 x 107 cm (L x W x H) 615 lbs; 279 kg 62.7 cubic feet; 1.77 cubic meters

# Silver Cloud

## Truck-Mounted Thermal Fogger with Complete Remote Control



- Twin pulse-jet engines for prolonged life
- Engine cut-off button at operators hand
- Automatic cut-off of formulation pump in the event of engine failure
- All formulation controls at operators hand
- Can be coupled to any standard chemical drum
- Formulation and fuel tanks are not pressurized

Utilizes twin resonant pulse-jet engines. Produces high output of dense fog for the control of flying insects such as mosquitoes, gnats, house flies, sand flies and black flies.

The latest designs are used in the construction of the air and fuel systems to ensure reliable and consistent starting and running. A new feature is the ability to start the machine directly at the engines.

Remote control box allows the operator to control the running of the engines and the fog output from the cab.

Part #	Description
53000	Silver Cloud Truck-Mounted Thermal Fogger
53000-20	Silver Cloud Truck-Mounted Thermal Fogger

### SILVER CLOUD

#### SPECIFICATIONS

Formulation Output	0-40 gallons/hr; 0-151.4 liters/hr; covers 250,000 cubic feet or 6500 cubic meters/min
Droplet Size	0.5 - 50 microns VMD
Engine	Twin pulse-jet engines; 88 Hp; 66 kW; 56,000Kcal/hr
Fuel Consumption	1.2 GPH; 4.5 liters/hr
Weight	Empty: 106 lbs; 48.2 kg. Full: 144 lbs; 65.5 kg
Fuel Tank (aluminum)	6 gallons; 9.5 liters; non-pressurized
Formulation Tank	Non-pressurized; belt driven, rotary gear pump Attachments provided to connect to 55 gallon (200 liter) drum.
Remote Control	Engine cut off; Formulation on / off Individual engine indicator light, fogging indicator light Fuel gauge, formulation output control
Dimensions	68 x 24 x 22 inches; 170 x 60 x 55 cm (L x W x H)
Shipping Data	73 x 27 x 23 inches; 185 x 69 x 58 cm (L x W x H) 141 lbs; 64 kg 26.2 cubic feet; 0.74 cubic meter



# Dyna-Jet L-30

The world's most technologically advanced ULV applicator

- High-volume axial blower 1,350 cubic ft./min. (38.3 cu. m/min) provides an extra large swath width ensuring complete coverage.
- 15-gallon (57 liter) lockable formulation tank. Translucent design allows for quick level viewing.
- Super-accurate FMI pumping system features a lockable cover and Curtis Dyna-Fog's exclusive Formulation Anti-Pulsing System (FAPS™).
- Remote-control features: tilt angle adjustment, machine on/off, spray on/off, formulation/flush selector, battery/hour meter (backlit for night operation).
- Quick release stainless steel vehicle mounting brackets.
- Patented articulating spray head powered via remote control.
- Water-resistant battery enclosure features chemical resistant stainless steel restraints.
- 180° Rotational support (manually operated).
- High-strength anodized aluminum frame and stainless steel base construction. Chemical-resistant powder coated surfaces keeps the machine looking like new.

Electric powered ULV generator. Digitally controlled highspeed rotary atomizer produces the industry's most consistently sized spray droplets not achievable by conventional nozzles. It features a unique remote controlled tilting head that allows for multi positioning of the spray.

The lightweight, aluminum and stainless steel construction provides years of low maintenance and trouble free use. Because the Dyna-Jet® operates entirely on electric power, the unit is not susceptible to weight issues and maintenance expenses normally associated with gasoline powered equipment.

Part #	Description
65100	Dyna-Jet L-30 Electric ULV Aerosol Generator
65100-20	Dyna-Jet L-30 Electric ULV Aerosol Generator
65100-1G	Dyna-Jet L-30 Electric ULV GPS Syncroflow
65100-1R	Dyna-Jet L-30 Electric ULV Radar Syncroflow



## DYNA-JET L-30

### SPECIFICATIONS

Formulation Output	Maximum pre-set flow rate: 14 ml/min; 414 ml/min
Droplet Size	90% of droplets below 24 microns VMD
Engine	Atomizer motor: 12 V DC, brushless, high speed shielded bearings, water resistant cover Current draw: 30 Amps maximum at 14 ml/min; 414 ml/min Note: Battery is not included with the machine and is sold separately
Blower	High-output, 1,350 cubic feet; 38.2 cubic meters
Pump Systems	Positive displacement, FMI ceramic piston pump, stainless steel housing; formulation anti-pulsing system (FAPS), tamper resistant, lockable cover
Nozzles	High-speed rotary atomizer type
Weight	Empty: 105 lbs; 47.6 kg. With battery: 147 lbs; 66.5 kg
Formulation Tank and Filter	15 gallons; 57 liters; with lockable cap 25 micron large capacity filter
Flush Tank	1 gallon; 3.8 liters
Options	12 V heavy-duty battery 12 V high-performance battery with AC charging kit Syncroflow Radar Flow Control Dyna-Trax GPS Tracking System Digital Tachometer AC Timer Kit Large capacity filter kit Application specific formulations filters Water resistant machine cover
Dimensions	44 x 29 x 39 inches; 112 x 74 x 99 cm (L x W x H)
Shipping Data	46 x 36 x 46 inches; 117 x 91 x 118 cm (L x W x H) 223 lbs; 101.6 kg

# Maxi-Pro 2D

## ULV Aerosol Applicator High Performance & Reliability

More than 30 years of field performance. The Maxi-Pro 2D is loaded with features required for Vector Control by Health Ministries worldwide. Representing the base model of the Maxi-Pro line, the 2D was created out of the need for a professional grade vehicle mounted ULV sprayer with simplistic operation.



### MAXI-PRO 2D

#### SPECIFICATIONS

Formulation Output	Diaphragm pump – 0-128 oz/min; 0-3.8 liters/min
Droplet Size	90% of droplets below 20 microns VMD
Engine	Briggs & Stratton 18 Hp, twin cylinder, 4 cycle, electric start with alternator
Blower	Direct drive, positive displacement, rotary type; output up to 400 cfm air
Pump Systems	Diaphragm pump - high volume, corrosive resistant
Nozzles	Twin Dynafog Multimist with remote directional control of boom
Weight	Empty: 297 lbs; 135 kg. Full: 412 lbs; 187 kg
Fuel Tank	12.5 gallons; 47 liters; with a gauge
Formulation Tank	15 gallons; 57 liters; with lockable cap
Flush Tank	1 gallon; 3.8 liters
Dimensions	44 x 37 x 50 inches; 112 x 94 x 127 cm (L x W x H)
Shipping Data	47 x 39.5 x 39 inches; 122 x 102 x 99 cm (L x W x H) 586 lbs; 265.8 kg 43.3 cubic feet; 1.23 cubic meters

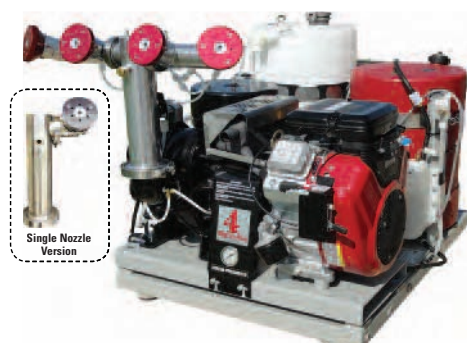
Part #	Description
62825-1	Maxi-Pro 4 (w/FMI Pump)
62825-5	Maxi-Pro 2P
62825-7	Maxi-Pro 2D
62825-18	Maxi-Pro 1-45 (w/FMI Pump)

Additional models available. Contact Curtis for more information.

# Maxi-Pro 4

## ULV Cold Fog Applicator-High Power With Maximum Efficiency

Highest performance specifications in the industry. Powered by an overhead valve 18 HP engine, the Maxi-Pro 4 has plenty of power for use in professional pest control and Health Ministries throughout the world. Welded steel construction and powder-coat finishes make the frame and other machine components extremely resistant to corrosion. Models available with Radar and GPS Automated Flow Control along with optional covers.



### MAXI-PRO 4

#### SPECIFICATIONS

Formulation Output	0-20 oz/min; 0-600 ml/min
Droplet Size	90% of droplets below 20 microns VMD
Engine	Briggs & Stratton 18 Hp, air cooled, twin cylinder, 4 cycle, electric start with alternator
Blower	Direct drive, positive displacement, rotary type; output up to 400 cfm air
Pump Systems	Diaphragm pump - high volume, corrosive resistant Gear pump - stainless steel, magnetically coupled FMI - ceramic piston with carbon cylinder Optional radar syncroflo automatic control with digital display
Nozzles	Four Multimist nozzles adjustable 360 degrees
Fuel Tank	1.8 gallons; 7 liters; with a gauge
Formulation Tank	15 gallons; 57 liters; with lockable cap, liquid level graduation marks
Flush Tank	1 gallon; 3.8 liters, with tethered cap
Options	20 Hp OHV, Honda engine Gear pump or Diaphragm pump Heavy duty 12 V battery (add 20 lbs; 9.1 kg) Heavy duty machine cover Spray hour meter Dyna-Trax 2 GPS Recording
Dimensions	44 x 33 x 32 inches; 112 x 84 x 81 cm (L x W x H)
Shipping Data	46 x 36 x 39 inches; 117 x 91 x 99 cm (L x W x H) 495 lbs; 225 kg 37 cubic feet; 1.1 cubic meters

# Typhoon 1

One Machine Provides Total Flexibility: Adulticide, Larvacide, Barrier Spray

- 2-Year limited warranty
- Can be outfitted with the automated "Synchroflow System"
- Available with radar or GPS speed sensing

High Output Diaphragm Pump



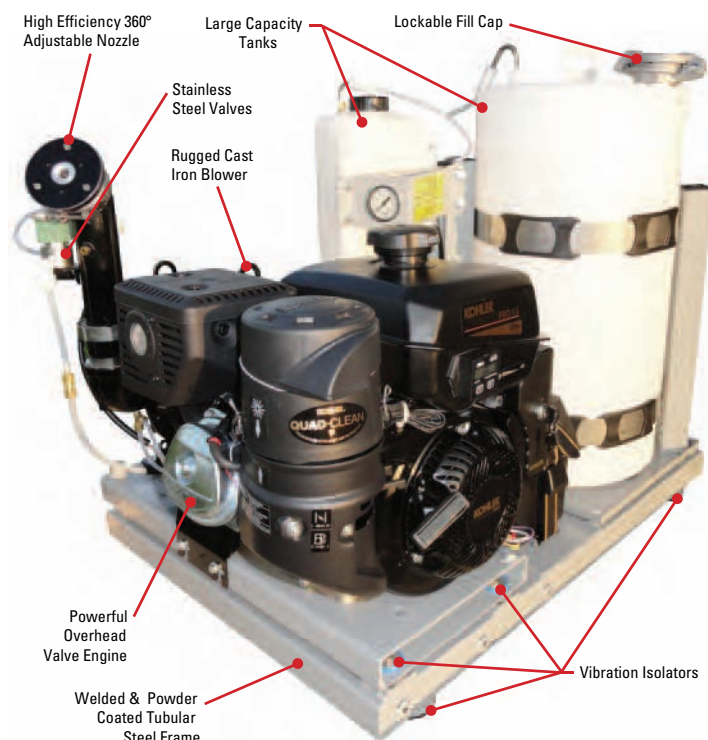
Remote Control



Part #	Description
64600-1	Typhoon 1 (w/FMI Pump)
64600-2	Typhoon 1 (w/Diaphragm Pump)

Considered the industry standard for medium-sized, vehicle mounted ULV cold foggers, the Typhoon 1 has the power and features of much more expensive machines.

Powered by a rugged overhead valve engine mounted onto a powder coated, welded steel frame, the Typhoon 1 is available with a choice of three different pumping systems (Diaphragm, Digital Gear or FMI Piston) and a variety of options tailored to fit your needs. The highly efficient "Multi-Mist" nozzle has years of proven experience in producing uniform droplet spectrums with more than 90% of droplets below 20 microns (VMD) at the recommended flow rates and pressures. With flow rate capabilities ranging from 0-128 oz/min (0-3.8 ltrs/min) using the diaphragm pumping system, higher flow rates and larger droplets can be achieved making the machine also ideal for barrier spraying and larvacide work. When paired with GPS systems like Dyna-Trax 2 and a GPS mapping software provider, the Typhoon 1 has full recording and reporting capability to assist in complying with EPA and/or other agency reporting requirements.



## TYPHOON 1

SPECIFICATIONS: DIAPHRAGM PUMP, GEAR PUMP, FMI PUMP

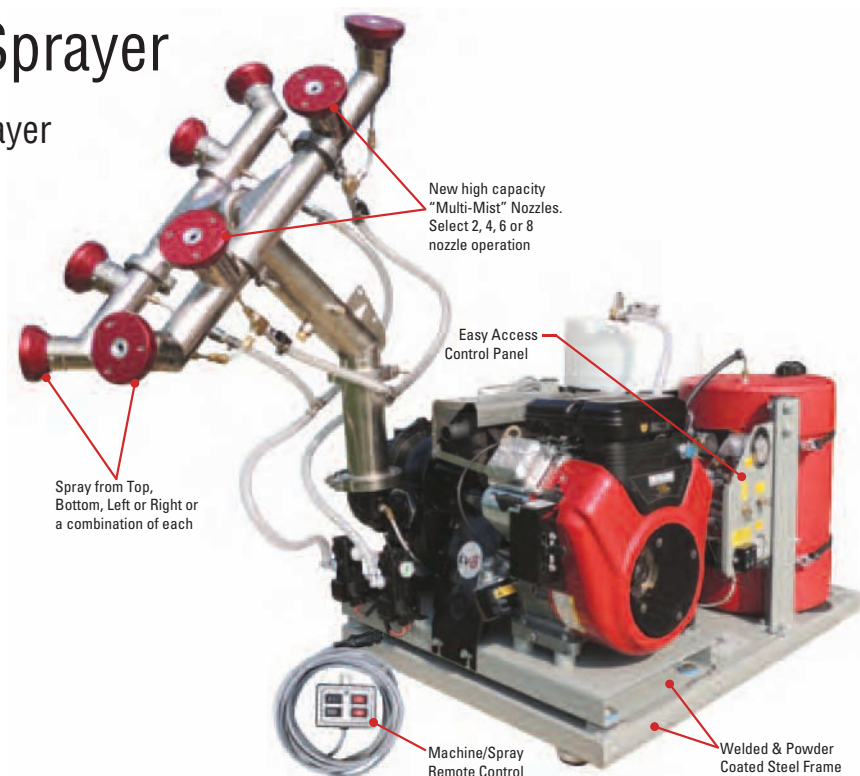
Formulation Output	Diaphragm pump – 0-128 oz/min; 0-3.8 liters/min Gear pump – 0-20 oz/min; 0-600 ml/min FMI pump – 0-18 oz/min; 0-532 ml/min
Droplet Size	90% of droplets below 20 microns VMD
Engine	Kohler 9.5 Hp (277 cc), 4-cycle, OHV, electric start. Optional Honda 10.5 Hp (344 cc), 4-cycle, OHV, or Yanmar diesel
Blower	High volume, positive displacement, rotary type; 8.5 psi @ 2750 rpm; 12 psi (0.82 bar) 205 cfm (5.8 cubic meters/min)
Pump Systems	Diaphragm pump - high volume, corrosive resistant Gear pump - stainless steel, magnetically coupled FMI - ceramic piston with carbon cylinder Optional radar synchroflo automatic control with digital display
Nozzles	High efficiency single nozzle, adjusts 360 degrees, removable for cleaning
Gauges	Digital Tachometer/Hourmeter for engine; liquid filled pressure gauge for nozzle boom pressure
Weight	Empty: 297 lbs; 135 kg. Full: 412 lbs; 187 kg
Fuel Tank	1.8 gallons; 7 liters; with a gauge
Formulation Tank	15 gallons; 57 liters; with lockable cap
Flush Tank	1 gallon; 3.8 liters
Dimensions	41.5 x 29 x 32 inches; 105 x 74 x 81 cm (L x W x H)
Shipping Data	48 x 40 x 39 inches; 122 x 100 x 99 cm (L x W x H) 415 lbs; 188 kg 42.8 cubic feet; 1.2 cubic meters



# LV-8 Low Volume Sprayer

## Ag-Mister LV-8 Low Volume Sprayer

- Reduce application costs
- Best coverage per acre
- Low volume spraying
- Limited 2-year warranty
- Break the life cycle
- Optional 100 or 150 gallon formulation tank mounted on a welded steel frame with agitation pump, and high intensity LED work light.



Part #	Description
67000D	LV-8 Low Volume Sprayer
67000D-100	LV-8 Low Volume Sprayer with 100 Gallon Formulation tank
67000D-150	LV-8 Low Volume Sprayer with 150 Gallon Formulation tank

Low-volume spraying is the heart of effective, efficient and economical pest control in the Ag Industry. Studies have proven low volume control of pests to be a viable, effective option that is widely accepted and used around the world.

Break the life cycle of many pests using Low Volume spraying. We have gone to great lengths to be a part of studies and provide a solution that is economical, practical and effective. When it comes down to it, the LV-8 has the best coverage per area, the most versatile use and is a grower's final solution to controlling the common pests. Reduce application costs and effectively apply foliar systemics, oils, nutritional and insecticides from one machine.

Optional 100 or 150 gallon formulation tank mounted on a welded steel frame with agitation pump, and high intensity LED work light.

## LV-8 LOW VOLUME SPRAYER

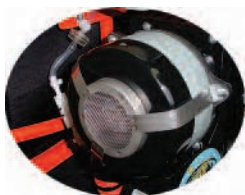
### SPECIFICATIONS

Formulation Output	0-4.8 gallons/min; 18.2 liters/min at 50 psi; 0.55 gallons/min; 2.1 liters/min flow to nozzles
Droplet Size	20-130 microns VMD; adjustable according to flow rate, viscosity, and boom pressure
Engine	Briggs & Stratton, 4-cycle, 2 cylinder OHV, 18 Hp, with electric start and alternator
Blower	Positive displacement, straight lobe, rotary type, direct drive Output air pressure – 0.6 psi. 0.41 bar Output air flow – 0-325 cfm, 9.2 cubic meters/min
Pump Systems	Positive displacement, high volume diaphragm pump (chemical resistant) – 4.8 gallons/min; 18.2 liters/min at 50 psi maximum output; 0.55 gallons/min; 2.1 liters/min maximum flow to nozzles
Nozzles	Eight air-assist nozzles, boom mounted, cluster type with 360 degrees adjustment
Weight	Empty: 297 lbs; 135 kg. Full: 412 lbs; 187 kg
Fuel Tank	12.2 gallons; 46 liters; cap with a level gauge
Formulation Tank	100 or 150 gallon; 378 or 568 liters
Flush Tank	15 gallon; 56.7 liters
Remote Control	Control spraying right, left, or both
Options	Machine start, agitation pump LED work light
Dimensions	50 x 31 x 30 inches; 127 x 79 x 76 cm (L x W x H)
Shipping Data	60 x 43 x 42 inches; 152 x 109 x 107 cm (L x W x H) 556 lbs; 252 kg 62.7 cubic feet; 1.78 cubic meters

# Twister XL3

## Motorized Knapsack ULV Sprayer

- Single high output Microtec™ nozzle
- Honda 4 stroke motor. Low emission, high performance engine
- Heavy-duty isolators reduce engine vibration



High speed rotary type, 3-stage steel shaft blower 95 CFM (2.69 M3/min). Positive displacement for maximum output and complete atomization.

Part #	Description
39750	Twister XL3 Motorized Knapsack ULV Sprayer

A real ULV Backpack/Knapsack. The Twister™ XL3 is the most impressive ULV backpack applicator in the world. The Twister™ features a remarkable nozzle and blower system that clearly outperforms the competition in value, durability and performance. It boasts the highest flow rates for true (ULV) droplets of any backpack sprayer on the market today. The Twister™ is designed as a lightweight compact aerosol generator that is ergonomically suited for long periods of use by the operator. This unit excels in controlling mosquitoes and other flying insects by way of its patented Microtec™ nozzle that produces 90% of the droplets under 20 microns at flow rates under 6.0 oz/min (178 ml/min). The quick change orifice system allows the operator to increase flow rates resulting in larger droplets produced which are ideal for leaving a residual deposit on surfaces such as vegetation and walls (barrier spraying for mosquitoes and flies). With the optional twin nozzle kit, you can apply formulations at a higher output where a fast application is required (such as poultry houses). The Twister™ is lightweight enough for most ATV racks, golf carts and small carts. Due to its high performance and its compact size, the Twister™ is the ultimate machine for adulticide, barrier spraying, and spot treatments.



### TWISTER XL3

#### SPECIFICATIONS

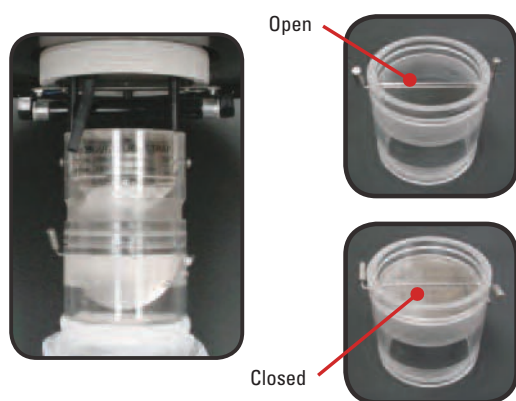
Formulation Output	Interchangeable restricting orifice to produce flow rate of 1.5 oz/min; 45 ml/min; 17 oz/min; 500 ml/min using optional dual nozzle attachment
Droplet Size	95% of droplets below 20 microns VMD at flow rates up to 6 oz/min; 178 ml/min. Higher flow rates produce larger droplets
Engine	Honda 4-stroke, high performance engine; emissions compliant, low fuel consumption, extra quiet. Operating speed 7500 rpm
Blower	High speed rotary type, 3-stage, belt driven, 95 cfm; 2.68 cubic meters/min, unrestricted, pressure 3 psi; 0.2 bar maximum; tangential discharge, ground steel shaft, 2 high quality ball bearings
Nozzles	Single high output nozzle. Optional extra dual nozzle kit for high output
Weight	Empty: 26 lbs; 11.8 kg
Fuel Tank	17 fl. oz., 500 ml (55 minutes run time)
Formulation Tank	1 gallon; 3.7 liters
Accessories	Curtis Viscometer to determine formulation viscosity; funnel, spare parts kit
Options	Twin Nozzle Kit #39716
Dimensions	14.7 x 12 x 22.5 inches; 37.5 x 30.5 x 57.2 cm (L x W x H)
Shipping Data	26 x 19 x 16 inches; 66.0 x 48.3 x 41.1 cm (L x W x H) 36 lbs; 16.3 kg 4.39 cubic feet; 0.123 cubic meters

# Miniature Light Traps

## For Mosquito Surveillance

- Accurately determine the most efficient treatment times and locations.
- Provide information on how well the spray pattern is penetrating target areas.
- Identify disease carrying species and the potential for vector-borne disease in the area.
- Determine species resistance to different insecticides.
- Evaluate the effectiveness of a spraying program.
- Provides a statistical representation of the population and type of species.
- Optional versions available including US Armed Forces Pest Management design (Model 2505).

Light Trap Options: Self closing air gate p/n 24115. This option promotes battery conservation and prevents specimens from escaping if the battery is exhausted.



- High performance motor
- Efficient operation
- Heavy-duty rain shield
- Corrosion resistant
- High intensity illumination
- Quiet operation
- Fine mesh net
- 4 D-water-resistant

Part #	Description
25086-6J	Miniature Light Traps with or without UV
25086-6N	Miniature Light Traps with or without UV

## MINIATURE LIGHT TRAPS

### SPECIFICATIONS

Power Supply	6 Volts DC (4-"D" cell or optional rechargeable battery)
Current Draw	300 ma (Incandescent Bulb) or 150 ma (LED UV Bulb)
Motor Speed	2500 RPM
Fan Diameter	3 In. (7.6 cm.) / 4 blades
Light Bulb Number	#44, #47 (incandescent), or LED UV Bulb (1W BA9S)
Weight	1.9 lbs. (0.86 kg.) without batteries
Shipping Weight	(1) unit/carton 4.0 lbs. (1.81 kg.) (4) units/carton 16 lbs. (7.26 kg.)
Shipping Dimensions	15.5 in. (39.4 cm.) L X 15.5 in. (39.4 cm.) W X 6.6 in. (16.8 cm.) H

For professional use. Curtis Dyna-Fog's miniature light trap models are patterned after the light trap originally developed by the United States Centers for Disease Control. These high quality traps are designed for use by professional mosquito districts and government agencies throughout the world. They are constructed using heavy-duty, corrosion resistant materials for durability and long life. These models feature high intensity incandescent or high efficiency LED ultraviolet illumination for maximum mosquito and sand fly attracting capabilities.



## Mister III Electric Start

Reliable, effective, and easy operation

Dispenses wettable powders, emulsifiable concentrates and flowables. Dispenses fungicides, insecticides, germicides and disinfectants as wettable powders, emulsifiable concentrates, flowables or liquids in a variety of applications: greenhouses, warehouses, food processing plants, swine/poultry houses and much more.



## Hurricane Ultra

Electric Portable Aerosol Applicator

Dispenses both oil and water-based products. The Hurricane is capable of dispensing disinfectants, deodorizers, germicides and insecticides. It is being used successfully in hospitals, restaurants, warehouses, nursing homes, schools, greenhouses and other institutions. With an adjustable output of 0-5 gallons per hour, this versatile unit gives you the power to handle both large and small area, wherever aerosol particle chemical treatment is needed.



## Nightstar

Treats up to 60,000 sq. ft. without auxiliary fans

Automatically dispenses all types of formulations into enclosed environments. Enables automatic, unattended spraying, reduced labor costs and worker exposure to chemicals. Assures a higher efficiency of chemical coverage by generating uniform droplets which are evenly distributed throughout the area being treated.



## Mini-Pro

High power with maximum efficiency

Simple to operate, set up, transport and store. Dispenses fungicides, insecticides, germicides, disinfectants, odor control and other chemical products. Engineered and developed with the professional in mind, it's ideal for cattle barns, food processing plants, warehouses, barracks, shopping ventures, schools, restaurant, apartments buildings, grain mills, factories and more.



## Mini-Lite

ULV/Mister

Light, affordable and handy ULV applicator. The ultimate in efficiency and convenience with comfort and ease of operation. Built to aircraft tolerances to achieve lightweight and superior performance in all applications. Designed as a dual-purpose machine for indoor and outdoor use. Can be quickly mounted on a small utility vehicle for mosquito and fly control.



Part #	Description
62150-1	Hurricane Ultra 110v
86650-1	Mister III
64100-1	Nightstar 110v
63600-1	Mini-Pro Diaphragm
63910	Mini-Lite

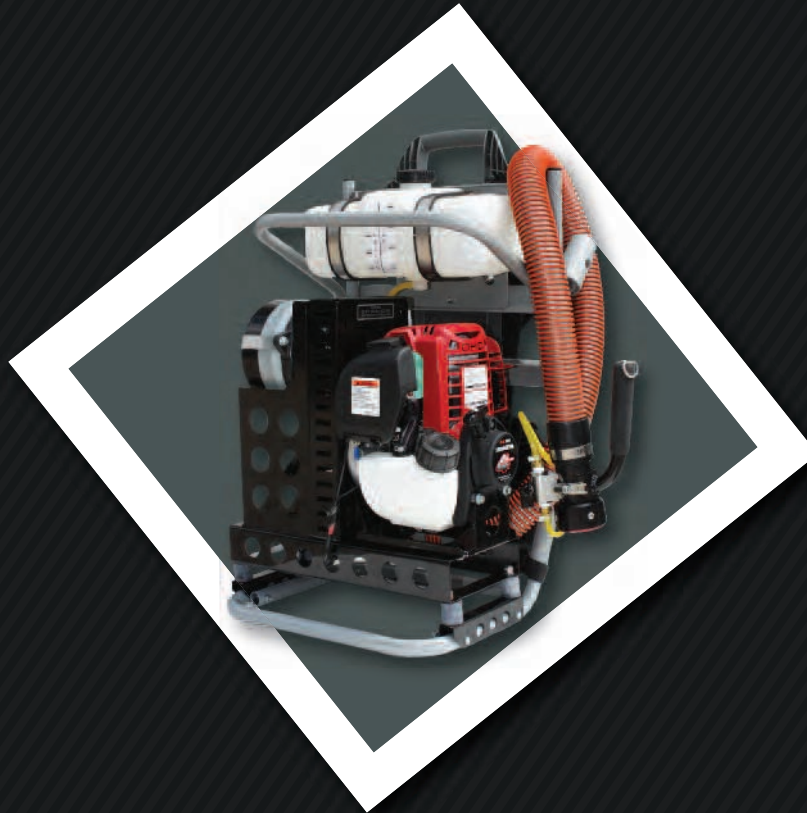
For further information on any of these products contact your Curtis Dyna-Fog distributor or B&G directly.



Sales and Technical Support  
135 Region South Drive  
Jackson GA 30233  
678-688-5601  
[www.bgequip.com](http://www.bgequip.com)

Manufacturing and  
R&D Facility  
525 Park Street  
Westfield, IN 46074  
[www.dynafog.com](http://www.dynafog.com)

**Innovators of Spraying and Fogging  
Technology Since 1947**



**SALES AND TECHNICAL SUPPORT**  
**135 Region South Drive**  
**Jackson GA 30233**  
**678-688-5601**  
**[www.bgequip.com](http://www.bgequip.com)**

**MANUFACTURING AND**  
**R&D FACILITY**  
**525 Park Street**  
**Westfield, IN 46074**  
**[www.dynafog.com](http://www.dynafog.com)**